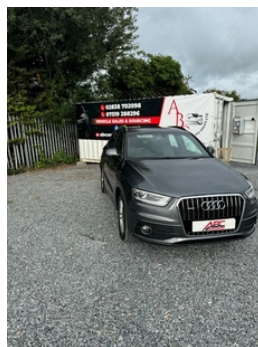
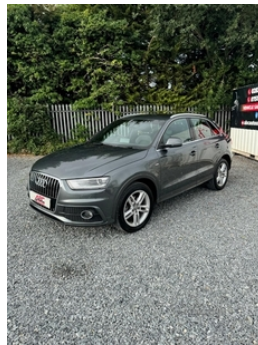


Audi Q3 2.0 TDI Quattro S Line 5dr | Jul 2013
STUNNING CAR

£7,995



Miles:	106000
Fuel Type:	Diesel
Transmission:	Manual
Colour:	Grey
Engine Size:	1968
CO2 Emission:	149
Tax Band:	F (£210 p/a)
Body Style:	Sport utility vehicle
Insurance group:	18E
Reg:	SR13ABZ

Technical Specs

DIMENSIONS	
Length:	4385mm
Width:	1831mm
Height:	1608mm
Seats:	5
Luggage Capacity (Seats Up):	420L
Gross Weight:	2135KG
Max. Loading Weight:	600KG

PERFORMANCE & ECONOMY	
Fuel Consum. (Urban Cold):	40.9MPG
Fuel Consum. (Extra Urban):	56.5MPG
Fuel Consum. (Combined):	49.6MPG
Fuel Tank Capacity:	64L
Number Of Gears:	6 SPEED
Top Speed:	122MPH
Acceleration 0-100 km/h:	9.9s
Engine Power BHP:	139.5BHP

2013 Audi Q3 S-Line
 2.0tdi
 106k miles
 Fsh
 Will come with yrs mot
 Timing belt and waterpump just done by us
 5 door
 Grey

Alloy wheel packages available

FINANCE AVAILABLE, STARTING AT £225.00/ MONTH

Vehicle Features

3 spoke leather multifunction sports steering wheel, 3x3 point rear seatbelts, 6.5" colour display screen, 12V power in rear centre console, ABS+Electronic Brake force Distribution, Acoustic windscreen, Aluminium door sill trims, Audi music interface, Black cloth headlining, Bluetooth hands free telephone connection, Body colour door mirrors, Body coloured bumpers, Chrome exhaust tailpipe, Chrome grille, Coming home function, Concert radio/single CD player with MP3 facility, Curtain airbags, Diesel particulate filter, Door mirror integrated indicators, Driver and passenger airbags, Driver and passenger side airbags, Dual zone climate control, EDL + ASR, Electrically operated child locks on rear doors, Electric front lumbar adjustment, Electromechanical parking brake, ESP, First aid kit, Front and

rear electric windows, Front and rear headrests, Front and rear velour floor mats, Front centre armrest with storage compartment and angle adjustment, Front fog lights, Front passenger airbag deactivation, Full paint finish, Heated windscreen washer jets, Height/reach adjust steering wheel, ISOFIX on front passenger and rear outer seats, LED daytime running lights, Light and rain sensor for auto activation of lights and windscreen wipers, Locking wheel bolts, Low washer fluid indicator, Matt brushed aluminium fascia and door trim inlays, MMI - Multi Media Interface control system, On board computer, PAS, Perforated leather gearknob, Rear wiper, Remote central locking, Seatbelt warning light, Service interval indicator, S Line body styling, Speed dependent audio volume control, Split fold rear seat, Sunband for windscreen, Thatcham category 1 alarm + immobiliser, Under floor storage in luggage area, Voice control system, Warning triangle, Xenon Plus headlights+washers+auto range adjust